



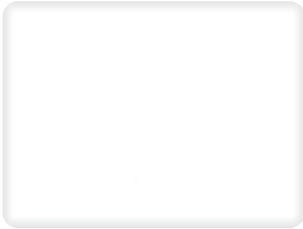
larson[®]
by Alucoil[®]

**Composite Panels for
Architectural Envelopes**

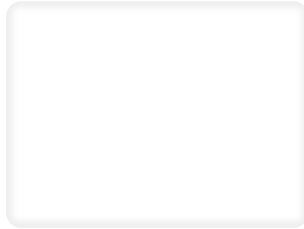


Alucoil[®]
North America

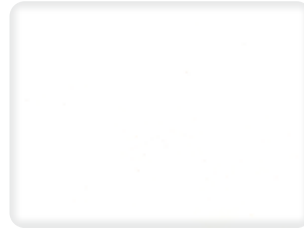
SOLID COLORS (PVDF)



RVW White⁽¹⁾ (US0979)



Bone White⁽¹⁾ (US0984)



Regal White⁽¹⁾ (US0985)



Cadet Gray⁽¹⁾ (US0986)



Charcoal⁽¹⁾ (US0974)



Classic Black⁽¹⁾ (US0988)



Classic Bronze⁽¹⁾ (US0987)

MICA AND METALLIC COLORS (PVDF)



Anodic Clear Mica⁽¹⁾ (US0963)



Silversmith Mica⁽¹⁾ (US0999)



Champagne Mica⁽¹⁾ (US0990)



Pewter Mica⁽¹⁾ (US0976)



Medium Gray Mica⁽¹⁾ (US0975)



Silver Metallic⁽²⁾ (US0978)



Champagne Metallic⁽²⁾ (US0981)



Pewter Metallic⁽²⁾ (US0993)

Mica and Metallic Color XL Series. These color series are directional in nature therefore proper estimating and installation precautions should be taken to ensure that panels are all installed in the same direction. Directional arrows are printed on panel protective film to aid in this practice. Due to the reflectivity of these finishes, optical perception of color tone may vary according to the angle from which panels are viewed, reflected light off of other structures, and different angles or planes on which panels are installed on a building elevation. To ensure color consistency with these finishes, it is highly recommended to order all material required at the same time, be they in single or multiple widths.



SOLID COLORS (PVDF 2L)



larson® by Alucoil® aluminum composite material is coil coated utilizing PVDF coatings. This kind of coating contains 70% of polyvinylidene fluoride (Kynar®500 and Hylar®5000 as main brands), which is known for its exceptional chemical stability and excellent resistance to ultraviolet radiation. It is used chiefly in the production and coating of equipment used in aggressive environments, and where high levels of mechanical and thermal resistance are required.

PVDF paint systems have been formulated to meet or exceed industry performance requisites such as AAMA 2605.

The use of PVDF paint systems allows us to offer the maximum warranties for each project

METALLIC COLORS (PVDF 2L)



ALUNATURAL FINISH



Alunatural ANODIC BRUSHED 90G (ES1623)
"Stocked in the USA"

STAINLESS STEEL FINISH



Metals STAINLESS STEEL WF30
"Stocked in the USA"

Find more regarding colors and projects at:



alucoildesign.com

MAIN POSSIBILITIES OF PAINTS

1. PVDF - Polyvinylidene Fluoride

Coating based on PVDF resins (Kynar®500 and Hylar®5000 as main brands) with extraordinary performance. Paint thickness (nominal):

a) ⁽¹⁾PVDF 2L Coastal: 31 μ approx.

b) ⁽²⁾PVDF 3L: 40 μ approx. (depending on the color)

c) PVDF 3L Coastal: 45 μ approx. (depending on the color)

- Gloss levels from 20 to 40 g.u.
- Excellent color stability, almost no chalking and very good chemical resistance.
- Excellent protection against weathering, UV radiation and atmospheric contaminants.
- Excellent flexibility for profiling, bending and roll forming.
- Recommended for demanding environments like industrial and coastal areas, airports, etc.

2. HDP - High Durable Polyester & HQP - High Quality Polyester

Coating based on HDP and polyester resins. Standard paint thickness:

a) HDP5 2L: from 35 to 40 μ approx, (depending on the color)

b) HDP5 3L: from 50 to 55 μ approx, (depending on the color)

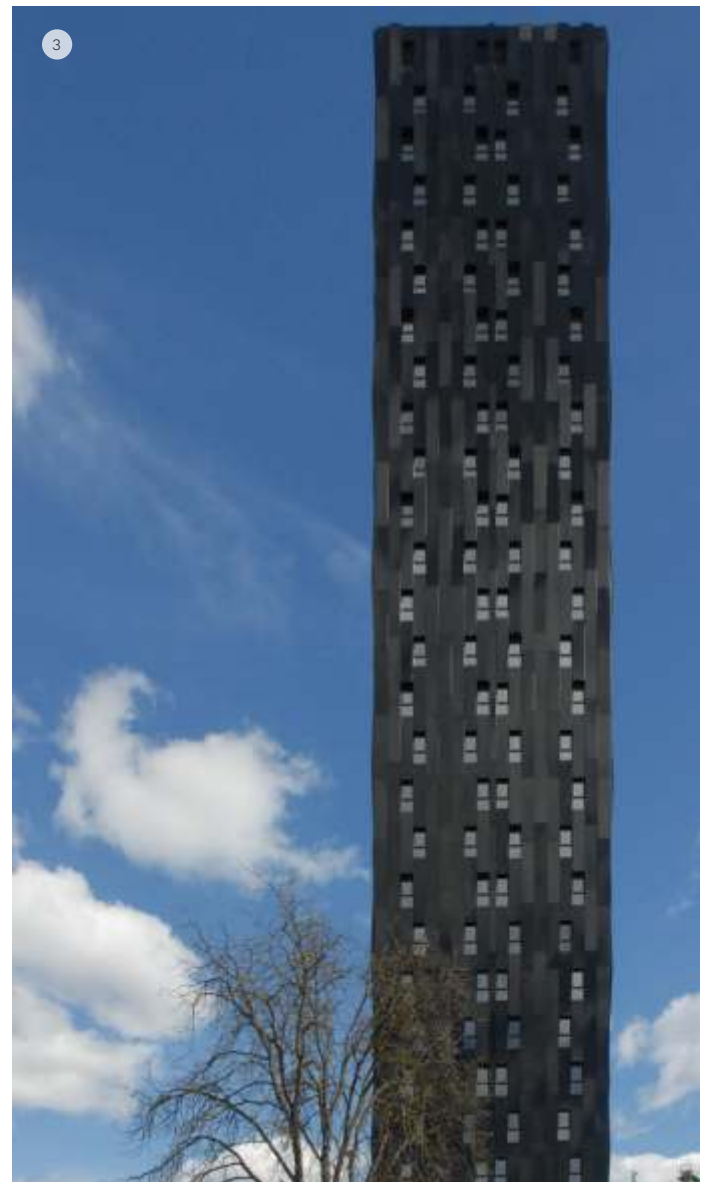
c) HQP 25 μ approx.

- Gloss levels from 10 to 90 g.u.
- Good protection against weathering, UV radiation and against atmospheric contaminants
- Good hardness and flexibility for Profiling, bending and roll forming

Stock in the USA 62 in/1575 mm wide & 196 in/5000 mm length

⁽³⁾Stock in SPAIN 59 in/1500 mm wide & 196 in/5000 mm length

Request other width availabilities - Widths not in stock have minimum order size



1. Charleston Civic Center (Charleston, SC, USA) Silver Metallic, Silversmith, Champagne Pearl, Champagne Metallic, ZMM Architects & Engineers of Charleston and TVS Design of Atlanta / **2. Virgin Hotel** (Dallas, TX, USA) White, 5Gstudio / **3. BOLUETA TOWER** (Bilbao, Spain) Jet Black 9005, VARquitectos / **4. Hunt Towers** (Rogers Arkansas, USA) Silver Metallic, CORE Architects

Color Chart

Transform your ideas into reality



Alucoil[®]
North America

Alucoil North America, LLC
1976 Joe Rogers Jr. Blvd. Manning, SC 29102 U.S.A
Tel: 803-505-6543
Email: info@alucoilnorthamerica.com
www.alucoil.com

All colors are as close to actual as allowed by the printing process. We advise to select the final color over physical samples.
Alucoil® North America, LLC reserves the right to change or remove information contained in this brochure without prior notice.
Please visit us at **www.alucoil.com** to check the latest version.